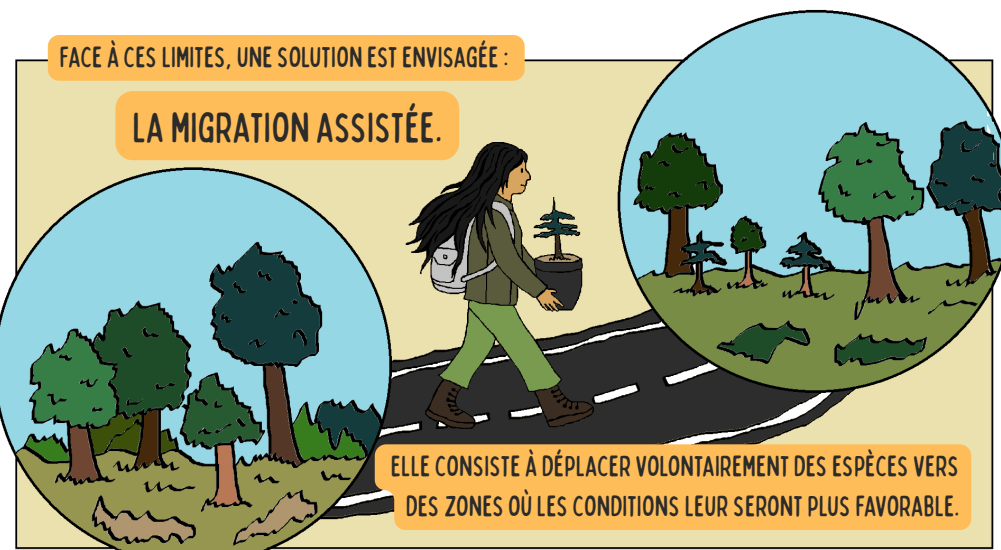
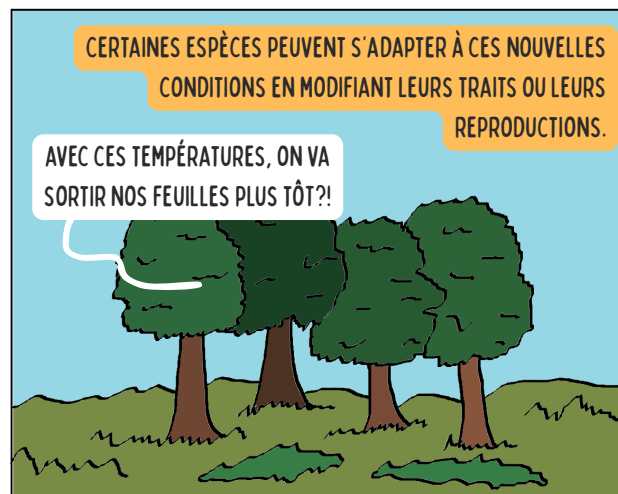
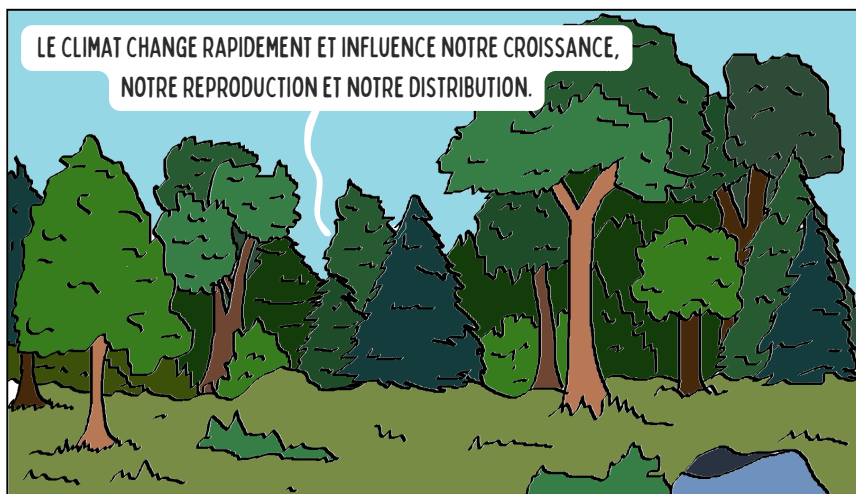


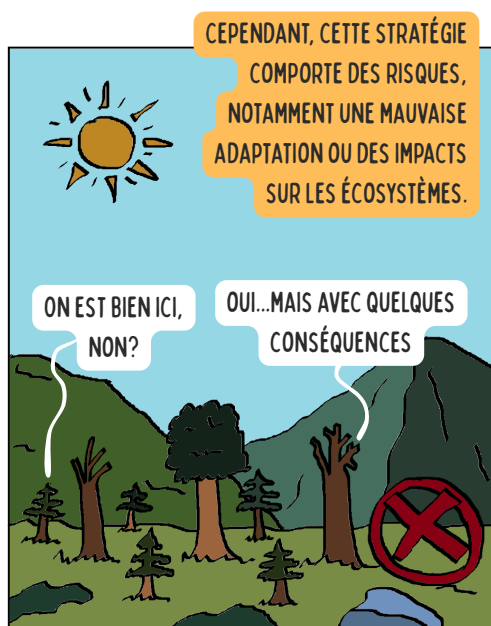
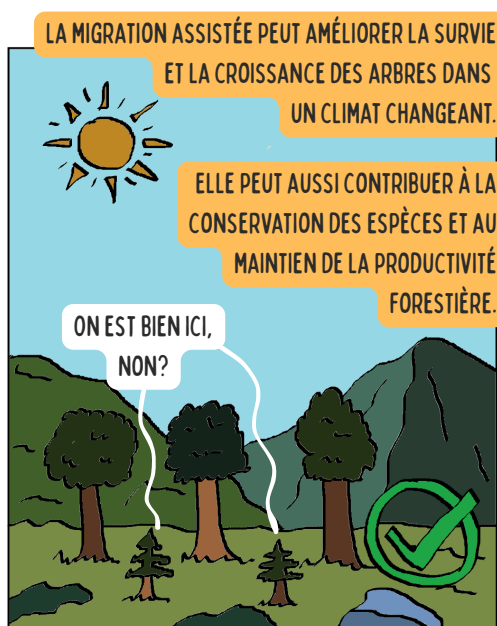
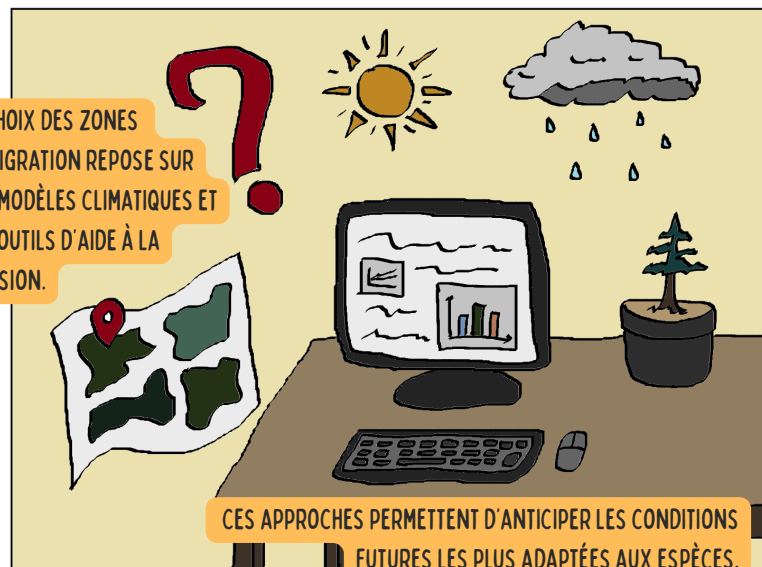
DROIT D'ASILE POUR LES POPULATIONS VICTIMES*

-ROCKIN SQUAT

QUAND LE CLIMAT COURT PLUS VITE QUE LES ARBRES.

TEXTE ET ILLUSTRATIONS : RINDRA RANAIVOMANANA





POUR LA CURIOSITÉ :

- *11'30 contre les lois racistes est un morceau collectif culte du rap français politique de 1997, destiné à récolter des fonds pour le Mouvement de l'immigration et des banlieues. Plusieurs artistes interprètent la chanson. Par ordre d'apparition : Jean-François Richet, Maître Madj (Assassin), Rockin' Squat (Assassin), Akhenaton (IAM), Arco et Mystik, Soldafada et Ménélik, Yazid, Fabe, Rootsneg (en créole), Djoloff (en wolof), Sleo, Kabal, Azé, Radicalkicker, Passi, Freeman (IAM), Stomy Bugsy et Passi (Ministère AMER). https://fr.wikipedia.org/wiki/11%2730_contre_les_lois_racistes
- **Walker, C. (2024). Trees on the move: Assisted migration could help forests keep pace with climate change. American Forests. <https://www.americanforests.org/article/trees-on-the-move-3/>
- Kijowska-Oberc, J., Staszak, A. M., Kamiński, J., & Ratajczak, E. (2020). Adaptation of Forest Trees to Rapidly Changing Climate. *Forests*, 11(2), 123. <https://doi.org/10.3390/f11020123>
- McKenney, D. W., Pedlar, J. H., Lawrence, K., Campbell, K., & Hutchinson, M. F. (2007). Potential Impacts of Climate Change on the Distribution of North American Trees, *BioScience*, Volume 57, Issue 11, Pages 939–948, <https://doi.org/10.1641/B571106>
- Aubin, I., Munson, A. D., Cardou, F., Burton, P. J., Isabel, N., Pedlar, J. H., Paquette, A., Taylor, A. R., Delagrangé, S., Kebli, H., Messier, C., Shipley, B., Valladares, F., Kattge, J., Boisvert-Marsh, L., & McKenney, D. (2016). Traits to stay, traits to move: a review of functional traits to assess sensitivity and adaptive capacity of temperate and boreal trees to climate change. *Environmental Reviews*. 24(2): 164-186. <https://doi.org/10.1139/er-2015-0072>
- Pedlar, J. H., McKenney, D. W., Aubin, I., Beardmore, T., Beaulieu, J., Iverson, L., O'Neill, G. A., Winder, R. S., & Ste-Marie, C. (2012). Placing Forestry in the Assisted Migration Debate, *BioScience*, Volume 62, Issue 9, September 2012, Pages 835–842, <https://doi.org/10.1525/bio.2012.62.9.10>
- Gray, L.K., Hamann, A. (2013). Tracking suitable habitat for tree populations under climate change in western North America. *Climatic Change* 117, 289–303 <https://doi.org/10.1007/s10584-012-0548-8>
- Shalev, Tal J., Meridith L.McClure, NikolasStevenson-Molnar, Gregory A.O'Neill, TongliWang, Joseph A.E.Stewart, and Glenn T.Howe. (2026). "Zone Matcher: A Climate-Based Web Application for Deployment and Assisted Migration of Forest Trees." *Ecosphere*17(4): e70570. <https://doi.org/10.1002/ecs2.70570>
- Koralewski, T. E., Wang, H.-H., Grant, W. E., & Byram, T. D. (2015). Plants on the move: Assisted migration of forest trees in the face of climate change. *Forest Ecology and Management*, 344, 30–37. <https://doi.org/10.1016/j.foreco.2015.02.014>
- Chagnon, L., & Larson, B. M. H. (2016). The right tree at the right place? Exploring urban foresters' perceptions of assisted migration. *Urban Forestry & Urban Greening*, 18, 221–227. <https://doi.org/10.1016/j.ufug.2016.06.010>
- Hewitt, N., Klenk, N., Smith, A. L., Bazely, D. R., Yan, N., Wood, S., MacLellan, J. I., Lipsig-Mummé, C., & Henriques, I. (2011). Taking stock of the assisted migration debate. *Biological Conservation*, 144(11), 2560–2572. <https://doi.org/10.1016/j.biocon.2011.04.031>

